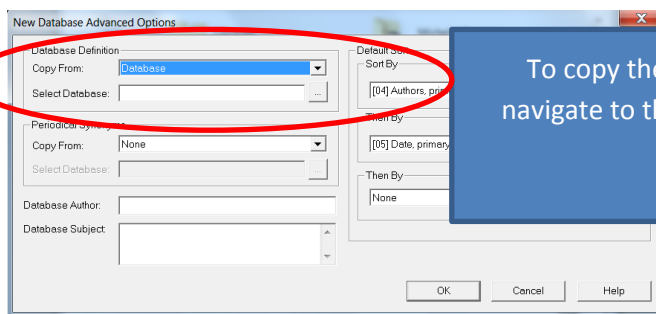
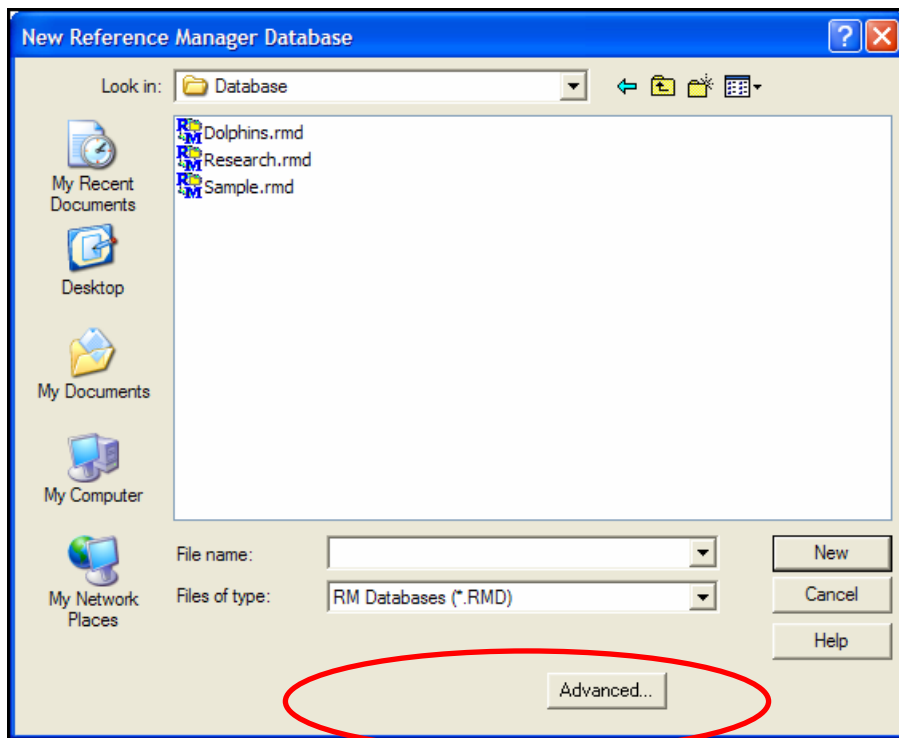


Create a New Ref Manager Database based on an existing, formatted database

1. From Reference Manager's File menu, choose New Database. Reference Manager presents a dialog prompting you to name and save the new database:
2. Enter a name for your new database. If you include an extension, use the extension ".rmd" which stands for "Reference Manager Database." If you do not include an extension, Reference Manager will add ".rmd" automatically.
3. Using the "Look in" list, choose the location where you would like to save the database.
4. Select the Advanced button to Copy Database Definitions from Reference Manager or a



To copy the Template database, Choose Copy From and navigate to the database you want to copy. Click OK. A blank database will open.